



EMERGENCY LANE DURING CONGESTION

SAVE A LIFE

Consider the appropriate positioning of vehicles on the motorway in cases of congestion.

up to 40%
more chances of survival

With the appropriate positioning of vehicles which are not involved in an accident on a motorway, we allow emergency vehicles faster access to the injured, which increases their chances of survival by 40%.

If vehicles ahead begin to stop on the road, **the positioning of vehicles GREATLY IMPACTS help** to the injured in cases of accident. Therefore, consider the appropriate positioning of vehicles when congestion occurs.

When congestion occurs...

Enough space for emergency vehicles must be left between the lines of vehicles in the fast and driving lanes. Emergency vehicles are equipped with blue or yellow lights (rescue service, fire fighters, police, regular maintenance operator, inspection services, etc.).

Vehicles in the far left traffic lane must arrange themselves towards the far left side, even beyond the lane marker. Vehicles that are stopping or find themselves in other traffic lanes must arrange themselves as much to the right as possible, even into the emergency lane.

Fine

Inappropriate positioning of vehicles during congestion on a motorway or expressway is subject to a fine of EUR 200.

www.dars.si

REŠI ŽIVLJENJE



DARS



do 40 %
večja možnost
preživetja

Upoštevaj pravilno razvrščanje vozil **ob zastoju** na avtocesti!

S pravilno razvrstitvijo vozil, ki niso udeležena v prometni nesreči na avtocesti, omogočimo reševalnim vozilom hitrejši dostop do ponesrečencev in s tem povečamo možnost preživetja tudi do 40%.

Razvrstitev vozil v primeru prometne nesreče na avtocesti **POMEMBNO VPLIVA na reševanje** poškodovanih, zato ob vsakem zastoju upoštevajte pravilo o razvrščanju vozil.

Vedno, ko pride do zastoja...

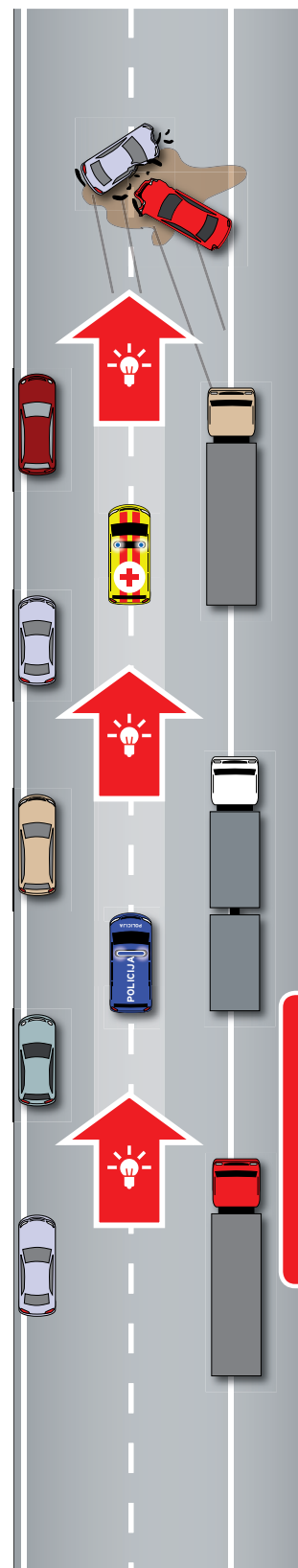
Med kolonama vozil na prehitevalnem pasu in voznem pasu mora biti dovolj prostora za vožnjo intervencijskih vozil, ki so opremljena z modro ali rumeno lučjo (reševalci, gasilci, policija, izvajalec rednega vzdrževanja, inšpekcijske službe,...).

Vozila na skrajnem levem prometnem pasu se morajo razvrstiti čim bolj levo, tudi čez robno črto. Vozila, ki se ustavljajo ali stojijo na ostalih prometnih pasovih, pa se morajo razvrstiti čim bolj desno, tudi na odstavni pas.

Globe

Predpisana globa za nepravilno razvrščeno vozilo ob zastoju na avtocesti in hitri cesti je **200 evrov**.

www.dars.si



**Vzpostavitev
REŠEVALNEGA PASU
na avtocesti
je obvezna ob
vsakem zastoju!**